

11/01234/FUL

The Judges Lodgings
Spa Road
Gloucester
GL1 1AE

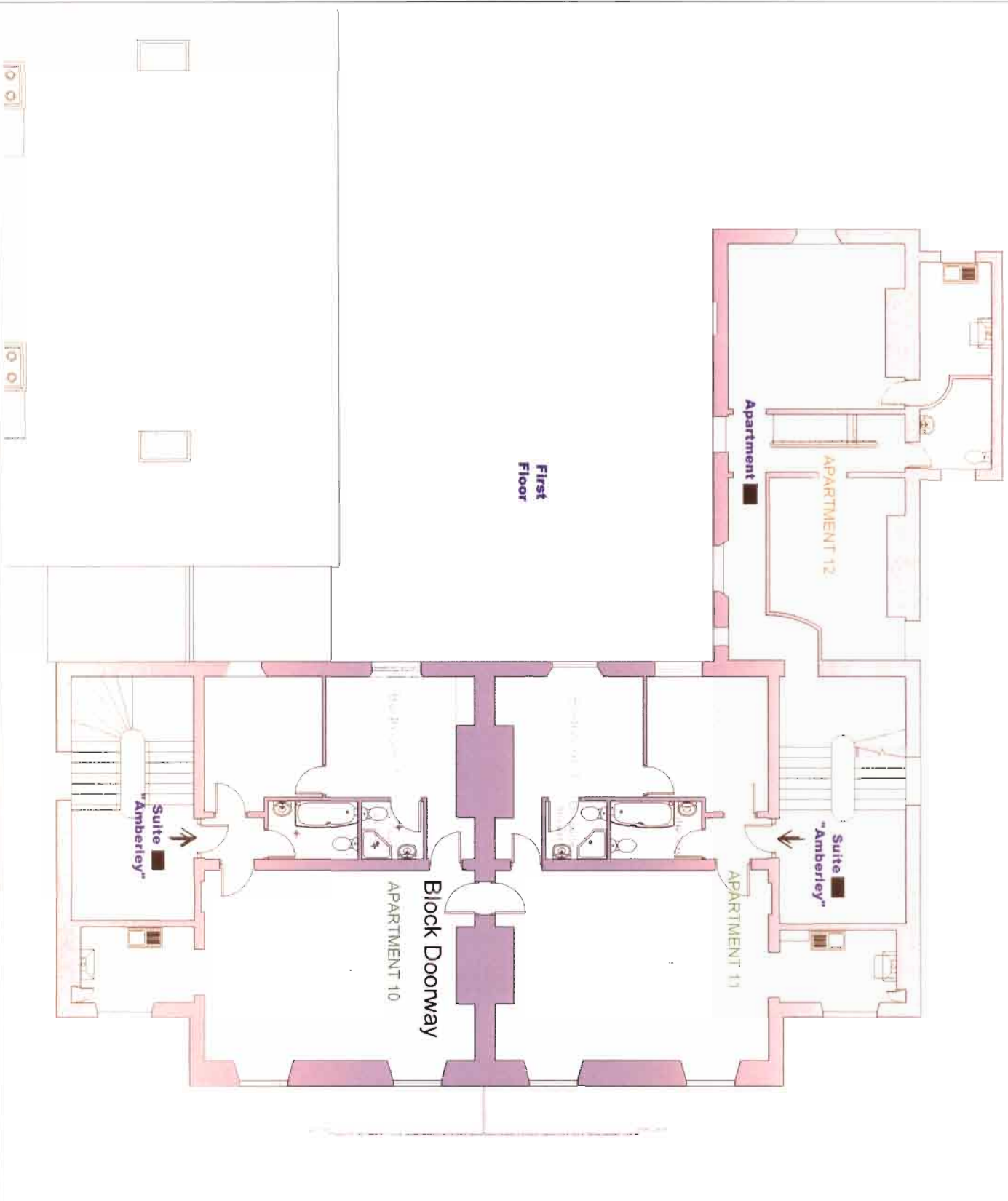


Planning Committee 10.01.2012



© Crown copyright and database rights 2011 Ordnance Survey 10019169
Unauthorised reproduction infringes Crown Copyright and may lead to prosecution or civil proceedings.

GENERAL NOTES



REV.	DATE	DESCRIPTION	BY:

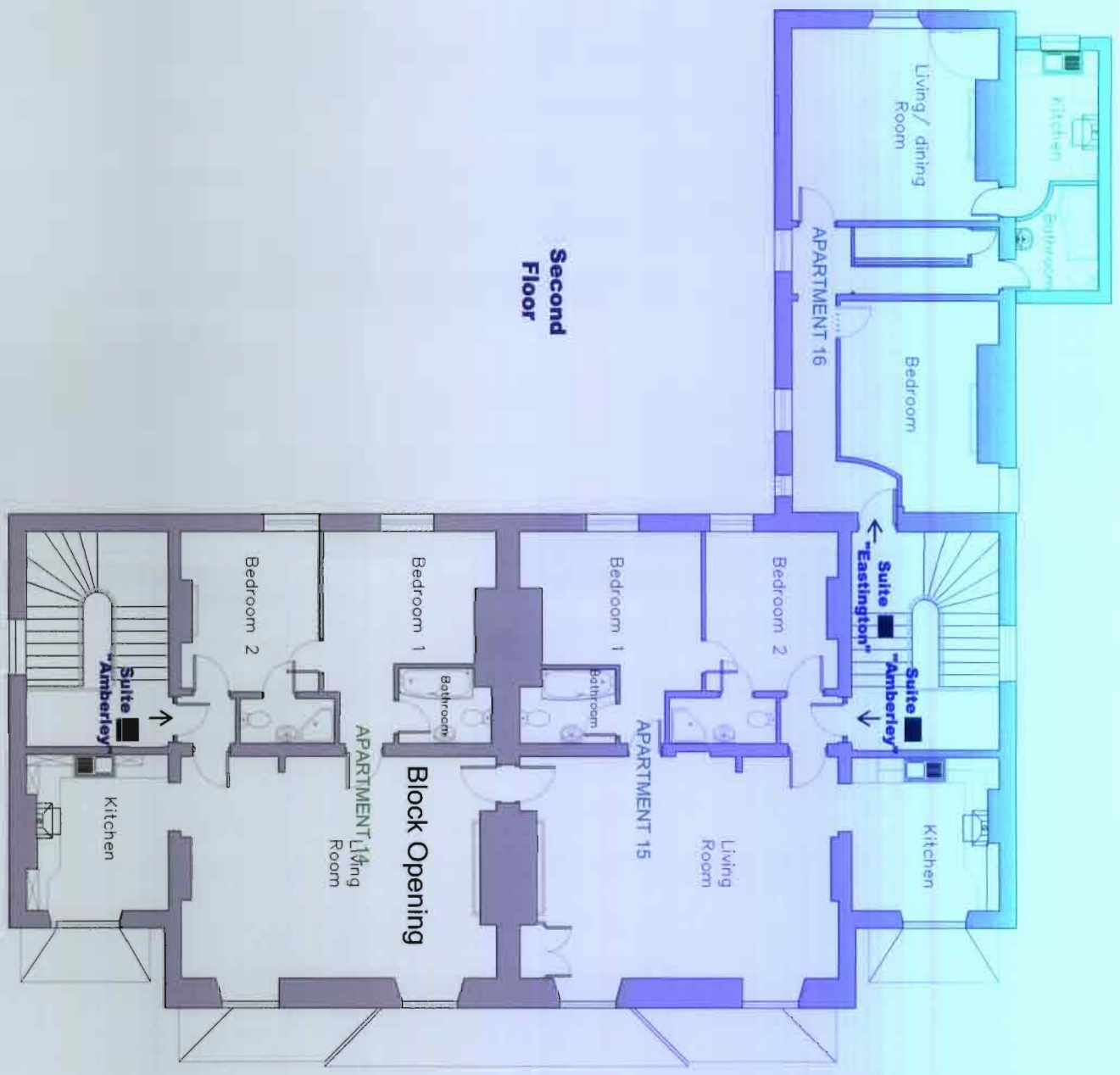
blanchworth
DEVELOPMENT
Roberts Walsh Projects Ltd

PROJECT:
Judges Lodgings
29 Spa Road
Gloucester
GL1 1AE

TITLE:
1st Floor
Layout Plan

ORIGINAL SCALE	DRAWING STATUS	PLANNING	REV
NTS	AS CONSTRUCTED	TENDER	C
DATE: NOVEMBER 2008	SCALE: 1:50	CONSTRUCTION	
DRAWING NO: 03		AS CONSTRUCTED	

GENERAL NOTES



Second Floor

B 31/10/11

REV.	DATE	DESCRIPTION	BY:



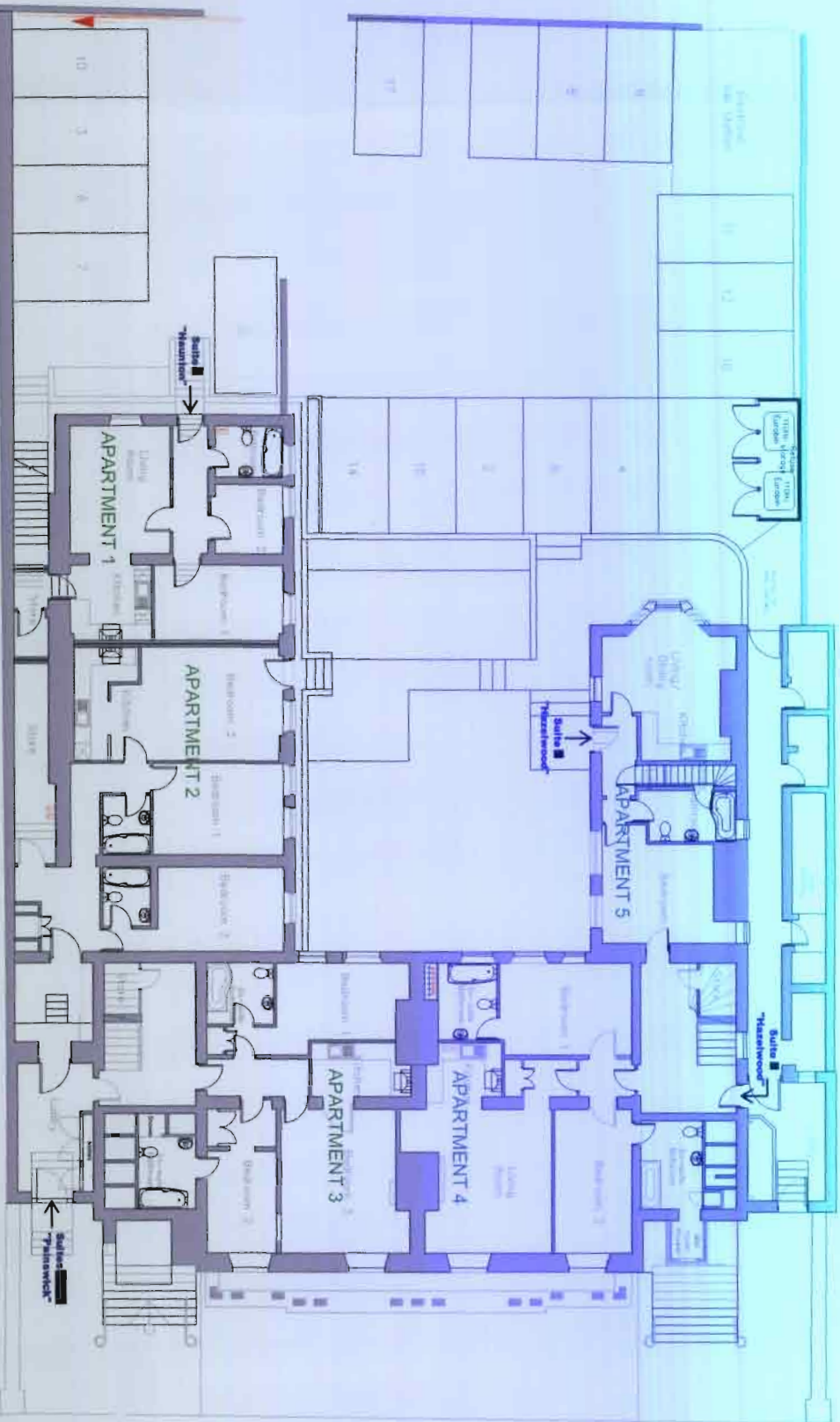
PROJECT:
Judges Lodgings
29 Spa Road
Gloucester
GL1 1AE

TITLE:
2nd Floor
Layout Plan

ORIGINAL SCALE:	PLANNING
NTS	TENDER
	CONSTRUCTION
	AS CONSTRUCTED

DRAWING NO.:	REV.:
04	C

GENERAL NOTES



REV.	DATE:	DESCRIPTION:	BY:

blanchworth
DEVELOPMENTS
Roberts Walsh Projects Ltd

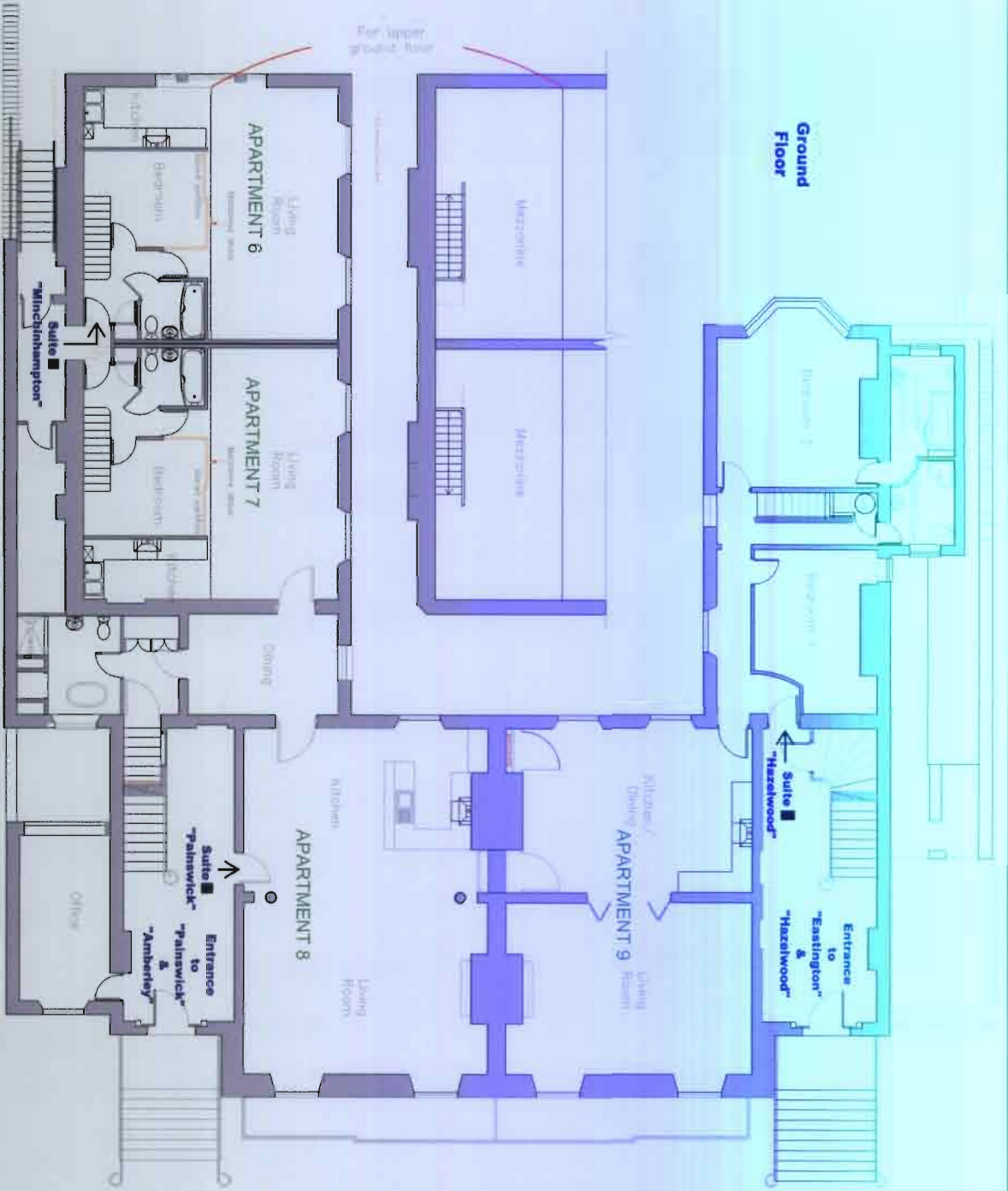
PROJECT:
Judges Lodgings
29 Spa Road
Gloucester
GL1 1AE

TITLE:
Garden Apartments

ORIGINAL SCALE:

NTS	DRAWING STATUS	PLANNING TENDER
AS CONSTRUCTED	AS CONSTRUCTED	AS CONSTRUCTED

DATE:	NOVEMBER 2008	DATE:	
DRAWING NO.:	01	REV.:	A



Ground Floor

ORIGINAL SCALE: NTS

PLANNING DRAWING STATUS: TENDER CONSTRUCTION AS CONSTRUCTED

DATE: NOVEMBER 2008

DRAWING NO.: 02

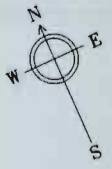
PROJECT: Judges Lodgings

29 Spa Road

Gloucester

GL1 1AE

GENERAL NOTES:



REV: B

DATE: 31/10/11

DESCRIPTION: shading C3 units

BY:

